



Crossfield Road NW3

Parkheath
Sold on Service





Crossfield Road, NW3, Asking Price £895,000, Leasehold - Share of Freehold

Camden Band F

- A delightful 2 bedroom, 2 bathroom garden flat
- Set in attractive period conversion
- Sole use of pretty 22ft rear patio garden
- Open, attractive and generous 20ft reception with kitchen
- 14ft main bedroom with built-in wardrobes, en suite bathroom and glass panelled doors to garden
- 9ft single bedroom/study with both bathrooms fully tiled
- Entire lower ground floor - 850 sq ft approx
- Share of freehold
- Ample storage including area above hallway
- Easy access for Swiss Cottage, Belsize Park, Belsize Village and Finchley Road



Belsize Park/Hampstead
208 Haverstock Hill
NW3 2AG
Sales 020 7431 1234
Lettings 020 7431 3104
nw3@parkheath.com

South/West Hampstead
192 West End Lane
NW6 1SG
Sales & Lettings
Tel 020 7794 7111
192@parkheath.com

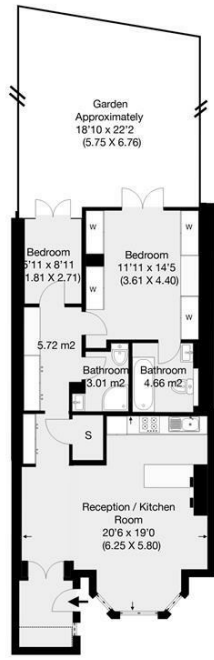
Kensal Rise
54-56 Chamberlayne Rd
NW10 3JH
Tel 020 8960 4845
kensal@parkheath.com

Property Management
192 West End Lane
NW6 1SG
020 7433 6174
pm@parkheath.com

Parkheath
Sold on Service

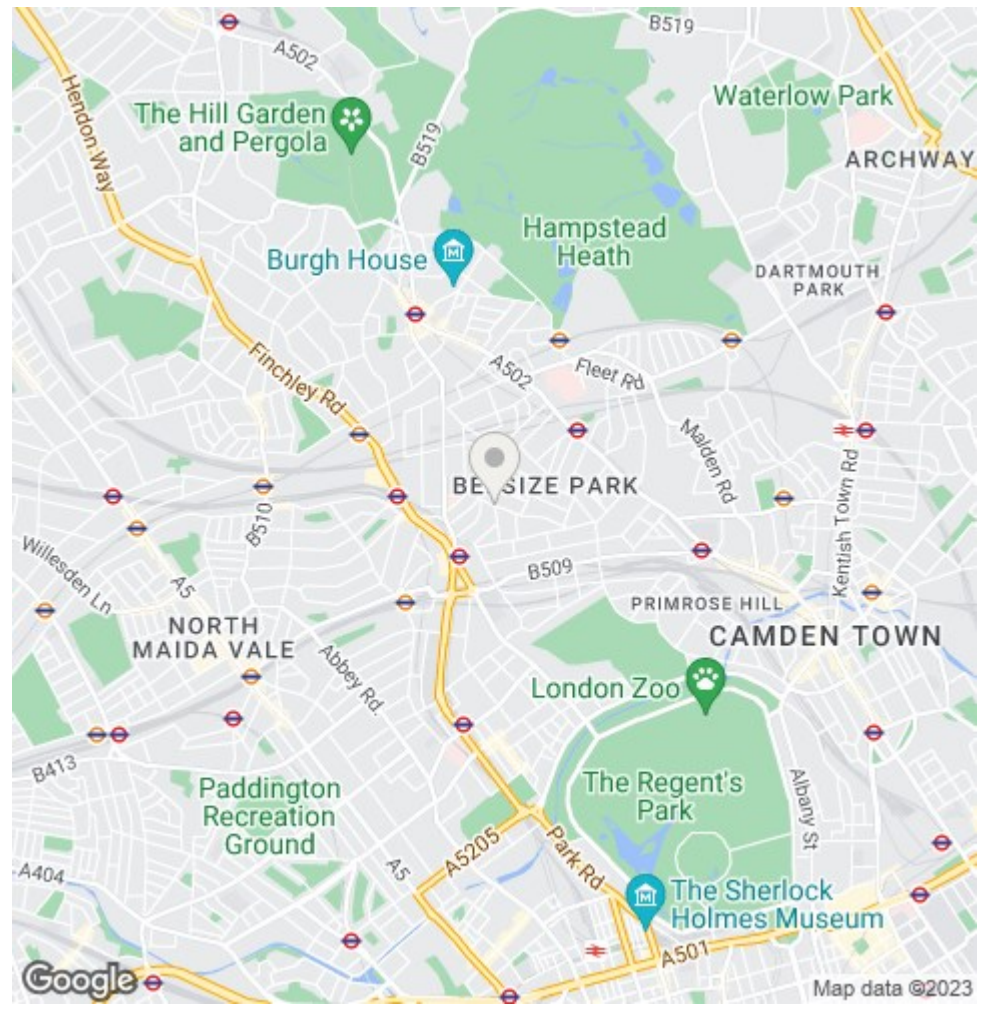
www.parkheath.com


Crossfield Road, London, NW3
 Approximate Gross Internal Area 79 sqm / 850 sqft



Garden Flat

THIS FLOOR PLAN IS PRODUCED FOR PARKHEATH SUBMITTED BY ARCHIMEDIA web: www.archi-media.co.uk
 Whilst every attempt has been made to ensure the accuracy of the floor plan contained herein, measurements of doors, windows and rooms are approximate and no responsibility is taken for any error, omission or misstatement. These plans are for representation purposes only and should be used as such by any prospective buyer or lessee. Specifically no guarantee is given on the gross internal floor area of the property if quoted on this plan and any figures given is initial guidance only and should be treated as such.



The particulars do not constitute part of an offer or contract. The particulars, including text, photographs and plans, are for the guidance only of prospective purchasers/tenants and must not be relied upon as statements of fact. The descriptions provided therein represent the opinion of the author and whilst given in good faith should not be construed as statements of fact. Nothing in these particulars shall be deemed a statement that the property is in good condition or otherwise or that any services or facilities are in good working order. All measurements are approximate